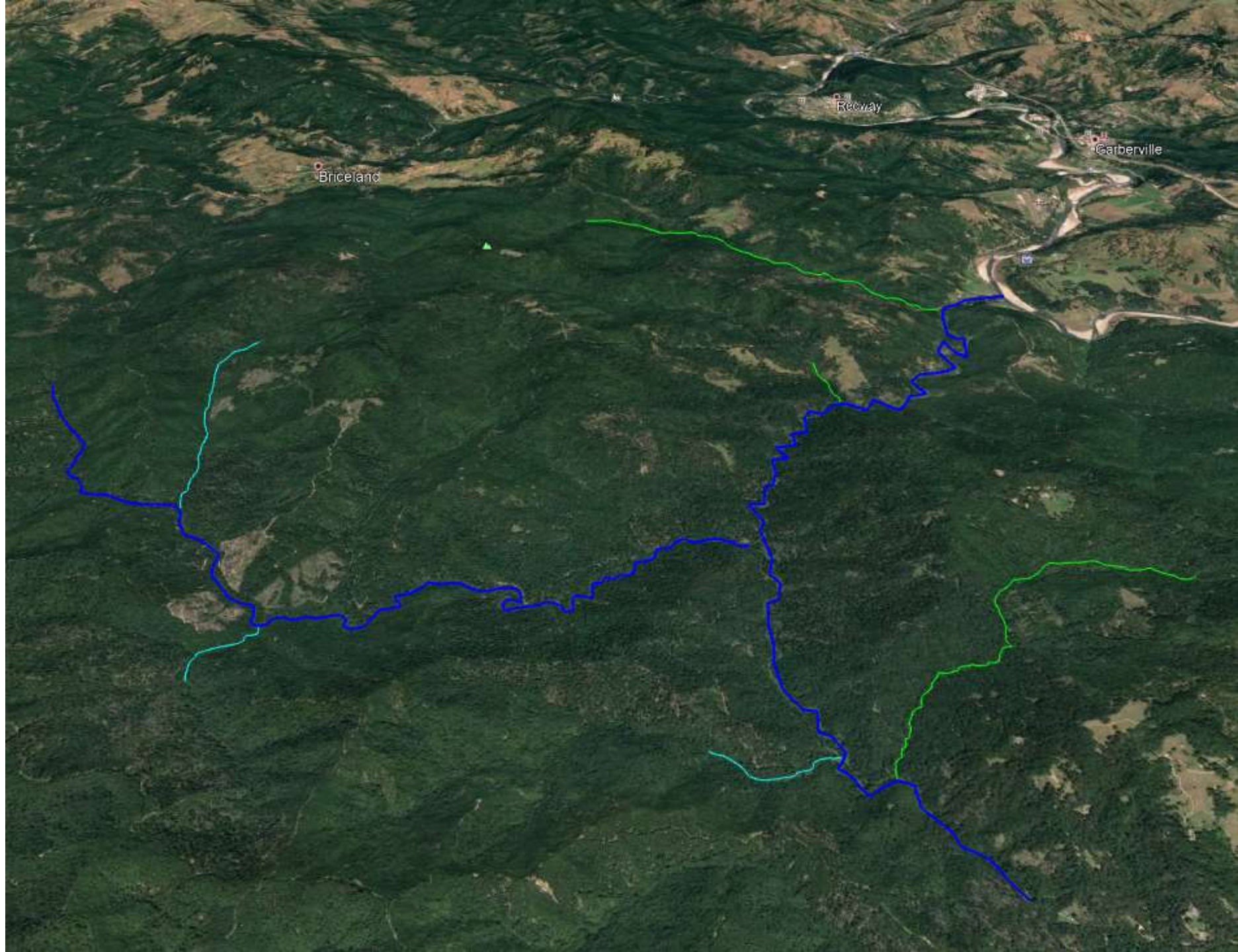


## Sproul Creek Watershed

- Blue lines = Mainstem and West Fork Sproul
- Turquoise = Unnamed Tributaries
- Green lines = Little Sproul, Warden, and Cox Creeks







1941 - 1942



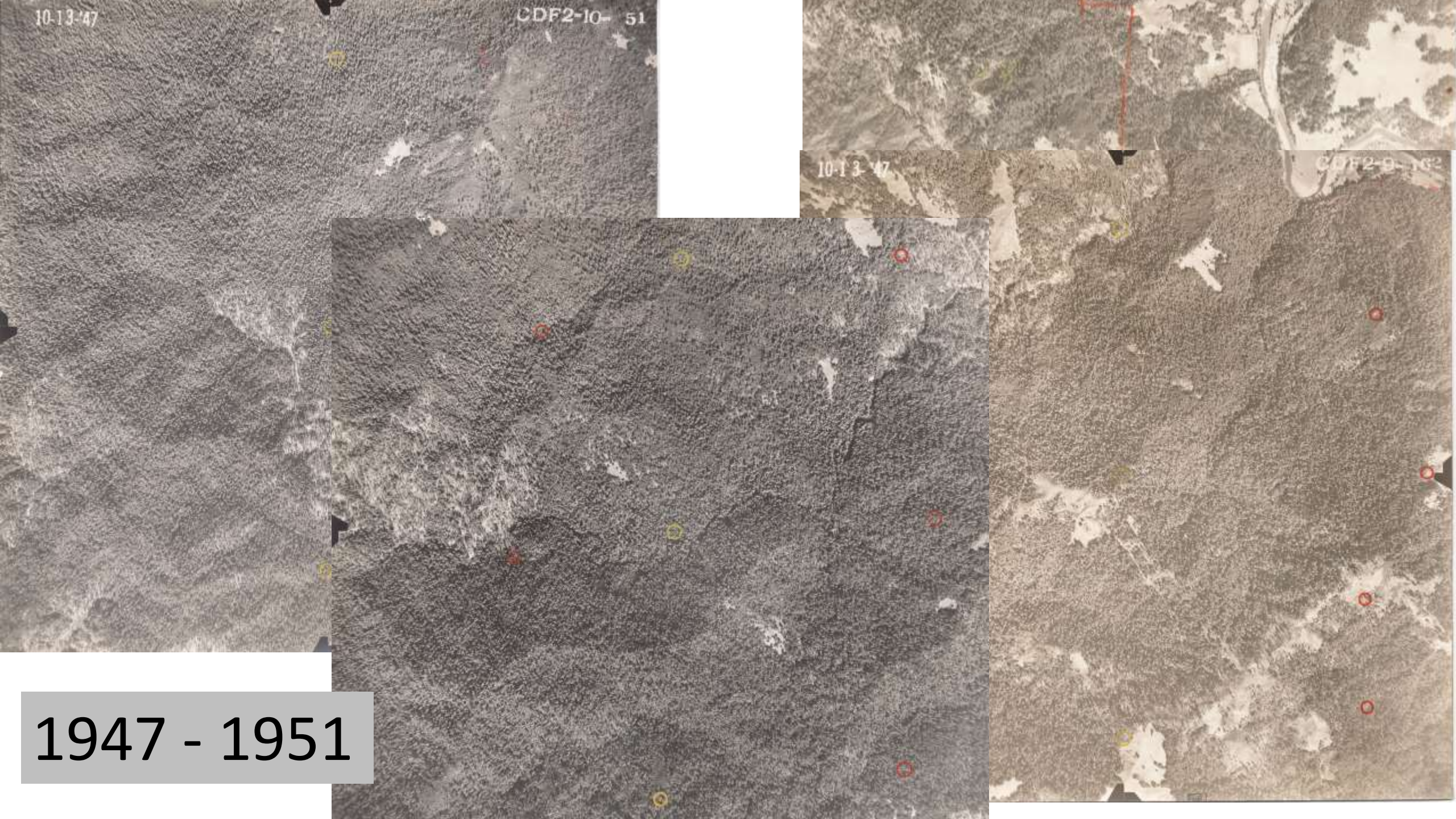
10-13-47

CDF2-10- 51

10-13-47

CDF2-9- 16

1947 - 1951

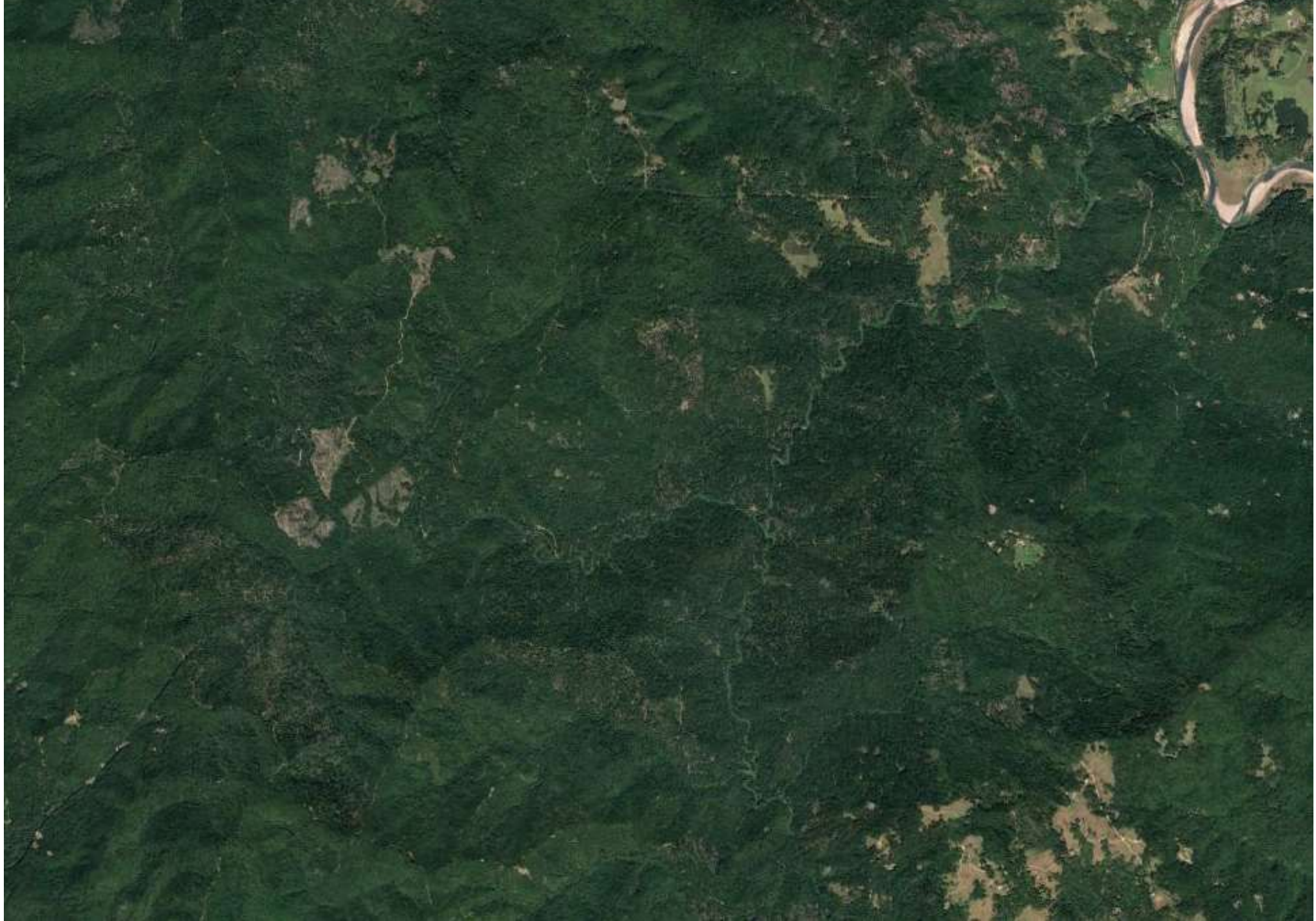




1965





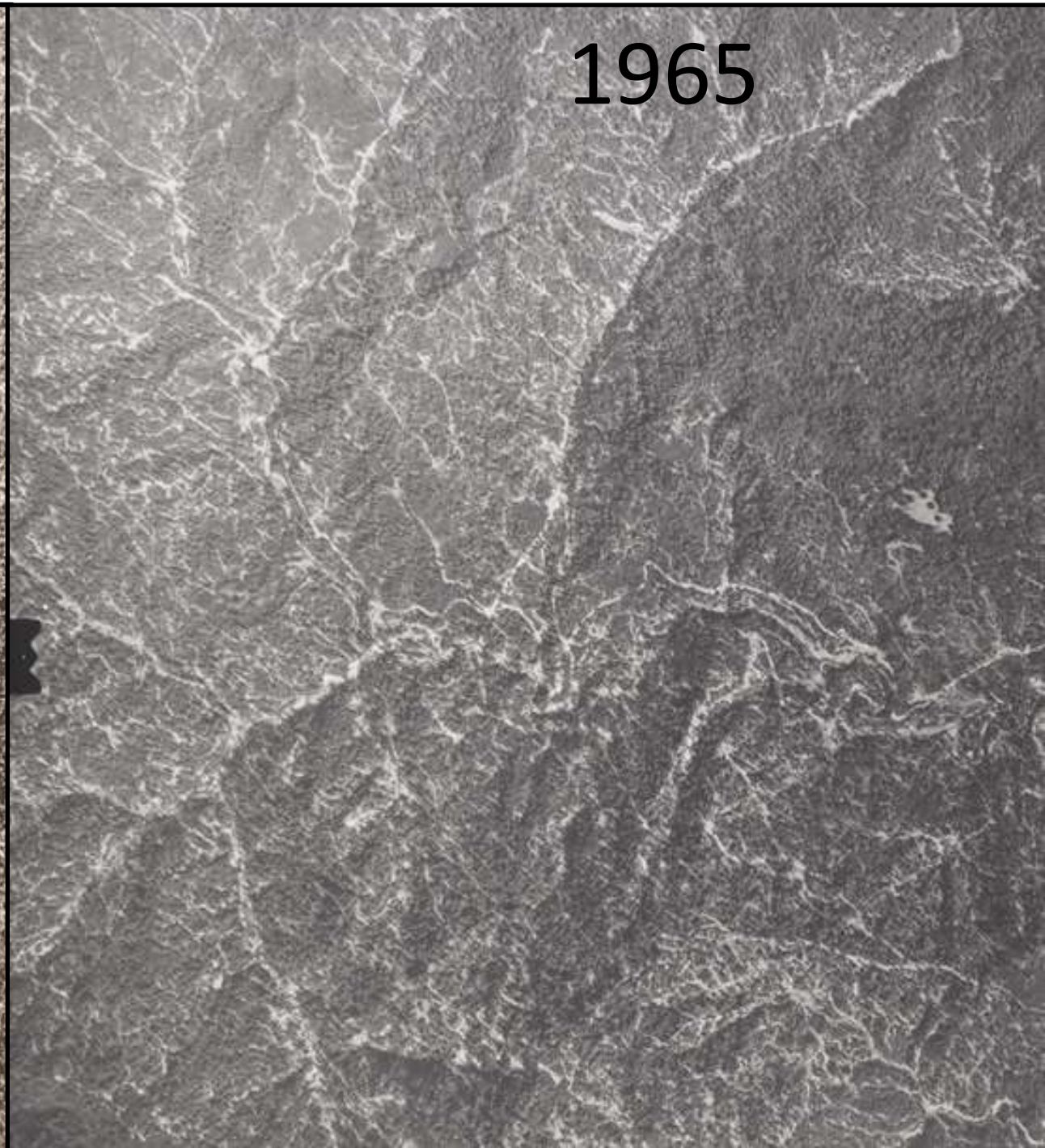




1942

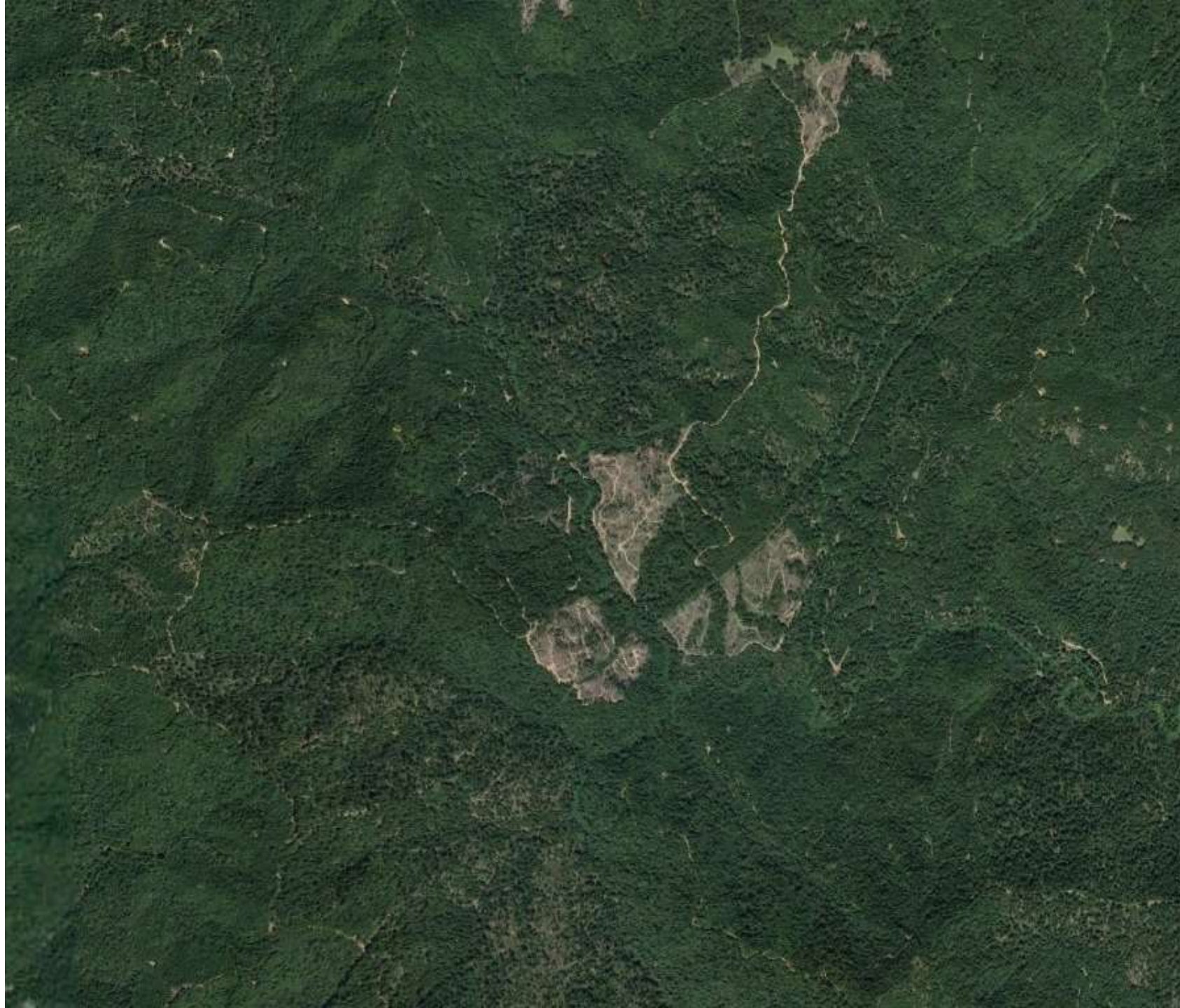


1965





Present Day





1942



1965





Present Day





“Although this creek is literally choked with log jams, caused by logging operations, steelhead were found near its source.”

- Gerald Holman, 1952



LOCATIONS OF LOG JAMS  
ON SPROWL CREEK  
DRAINAGE



Fig. 1 Log Jam No. 1, Lower end





LOCATIONS OF LOG JAMS  
ON SPROWL CREEK  
DRAINAGE



Fig. 7 Log Jam No. 3, Upper end



LOCATIONS OF LOG JAMS  
ON SPRAWL CREEK  
DRAINAGE



Fig. 11 Log Jam No. 5



LOCATIONS OF LOG JAMS  
ON SPRAWL CREEK  
DRAINAGE



Fig. 20-A Log Jam No. 10



LOCATIONS OF LOG JAMS  
ON SPROWL CREEK  
DRAINAGE



Fig. 38 Log Jam No. 20





LOCATIONS OF LOG JAMS  
ON SPROWL CREEK  
DRAINAGE



Fig. 44 Log Jam No. 24, Upper end



LOCATIONS OF LOG JAMS  
ON SPROWL CREEK  
DRAINAGE



Fig. 47-A Log Jam No. 26, Upstream side



**Map 1  
Sproul Creek  
South Fork Eel River Watershed  
Garberville Quad  
Mendocino County**

**Start of Survey**

**End of Survey  
River Mile\* 7.21**



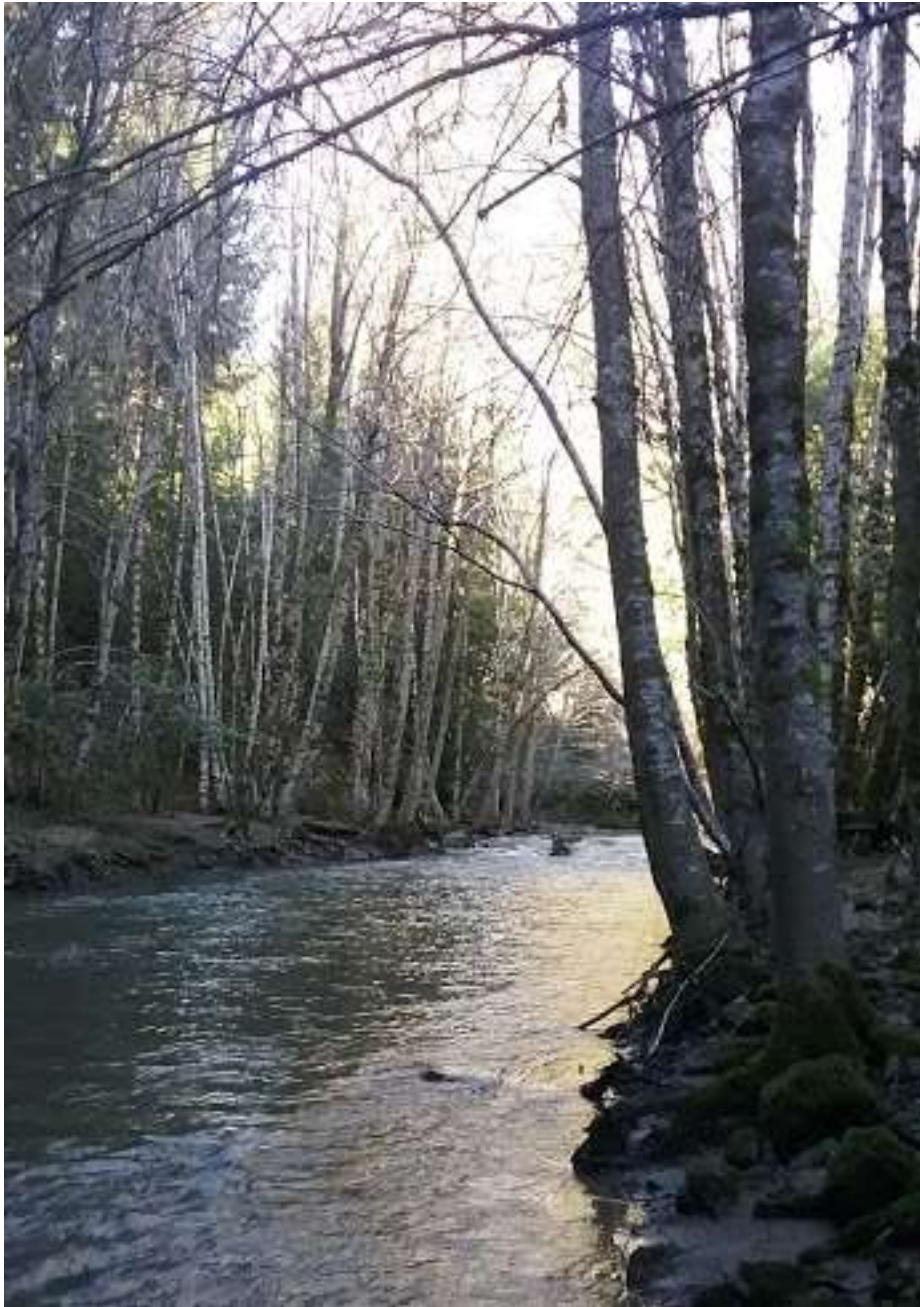




























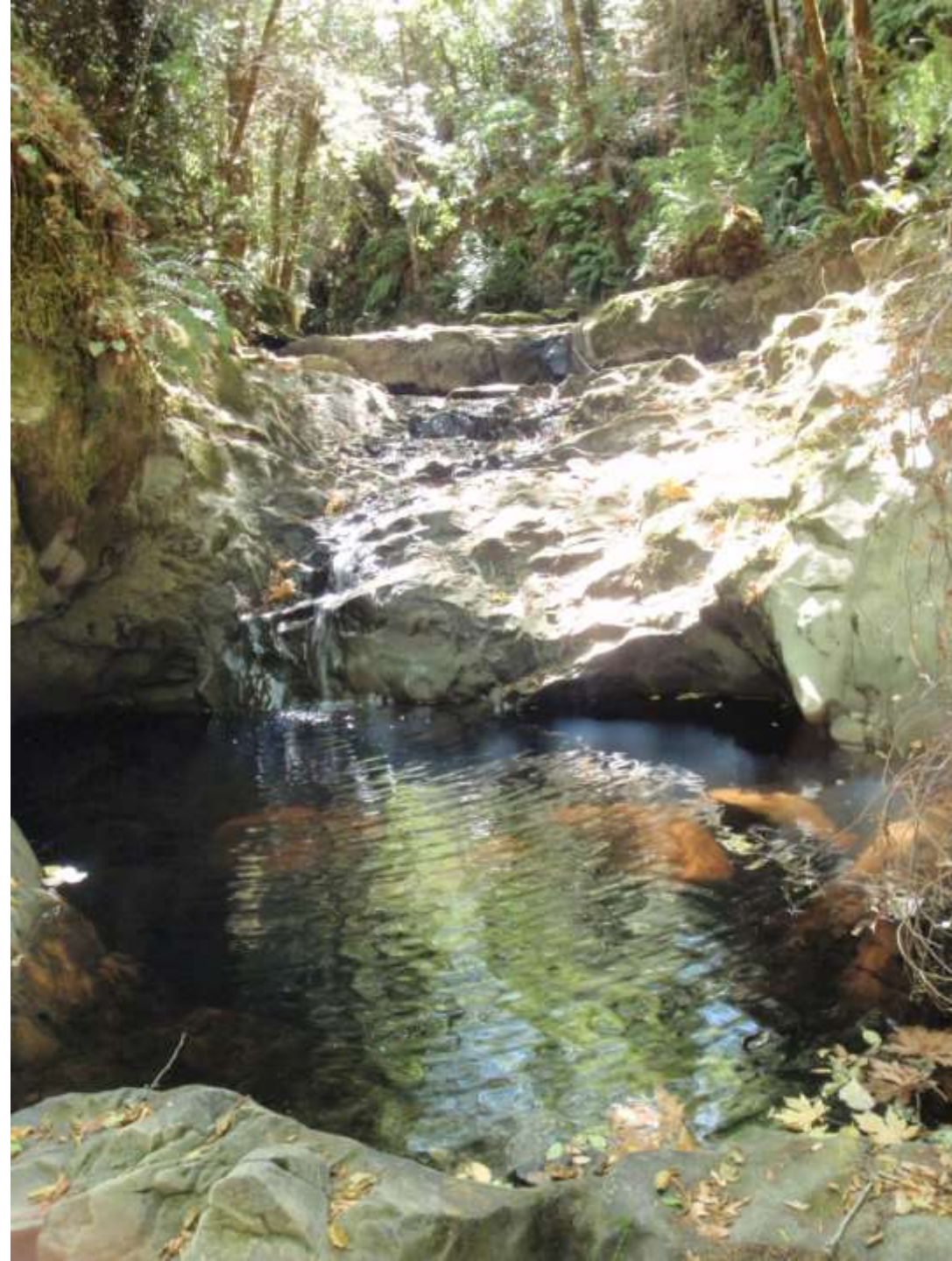




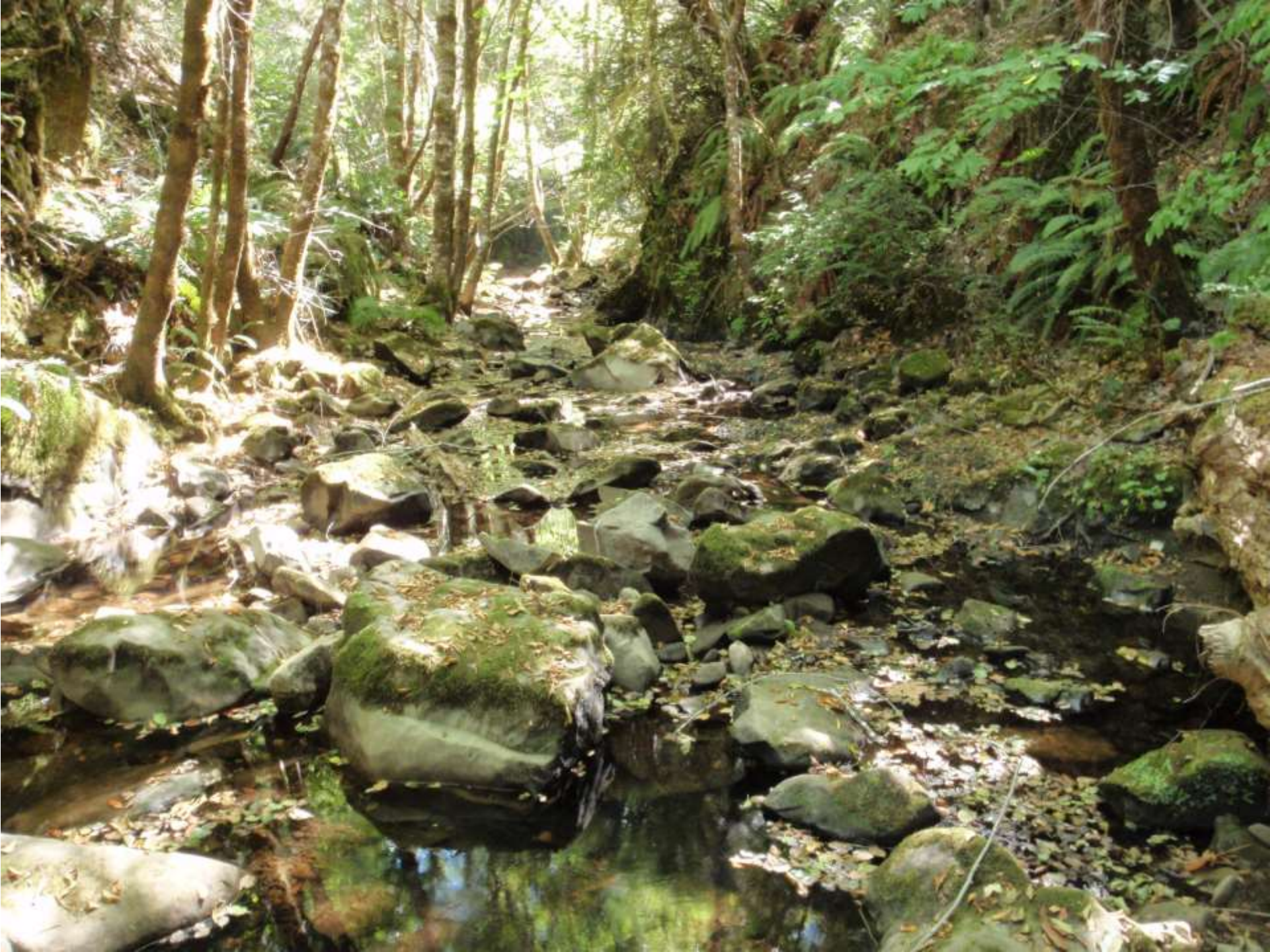


















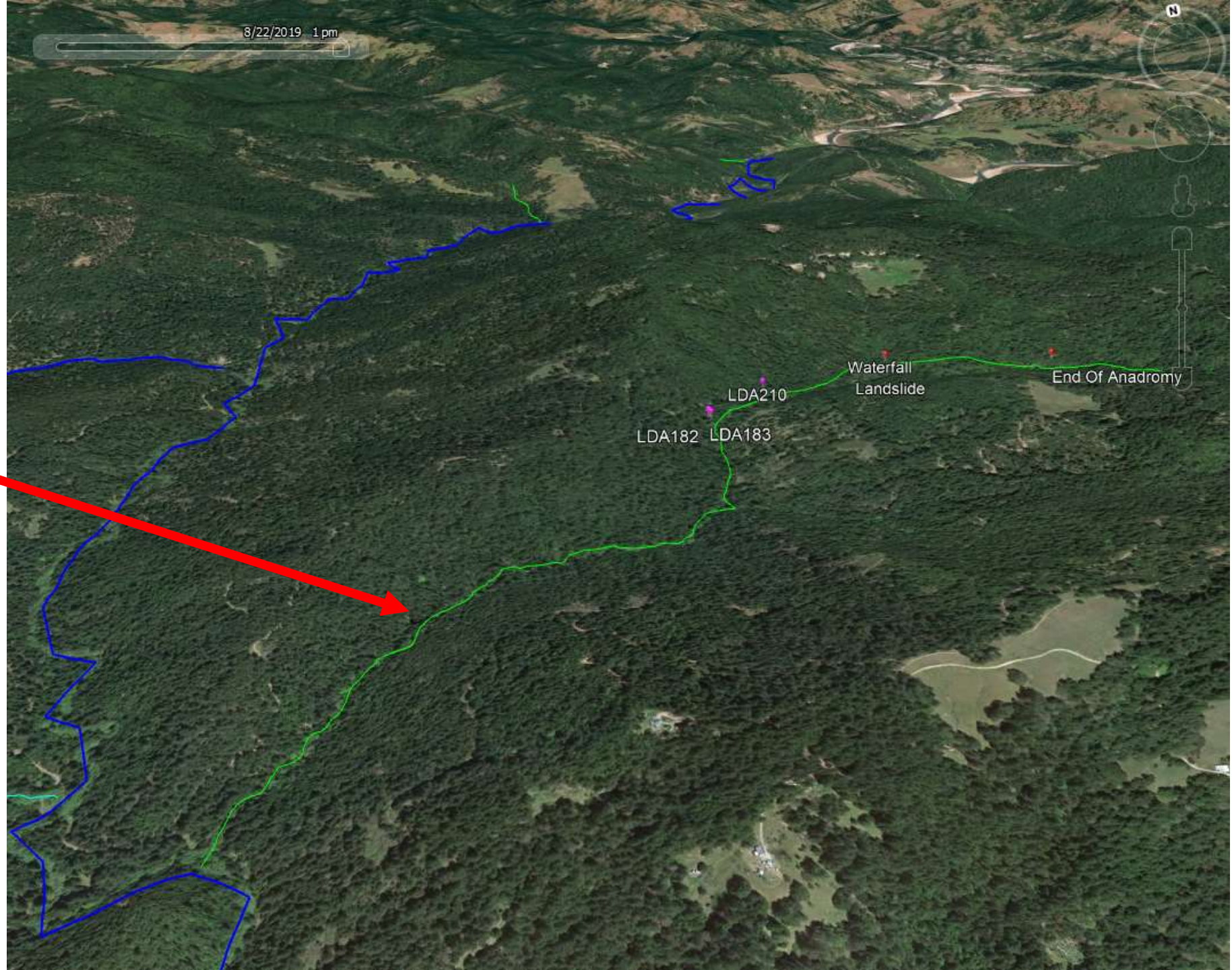








Cox Creek  
(565)







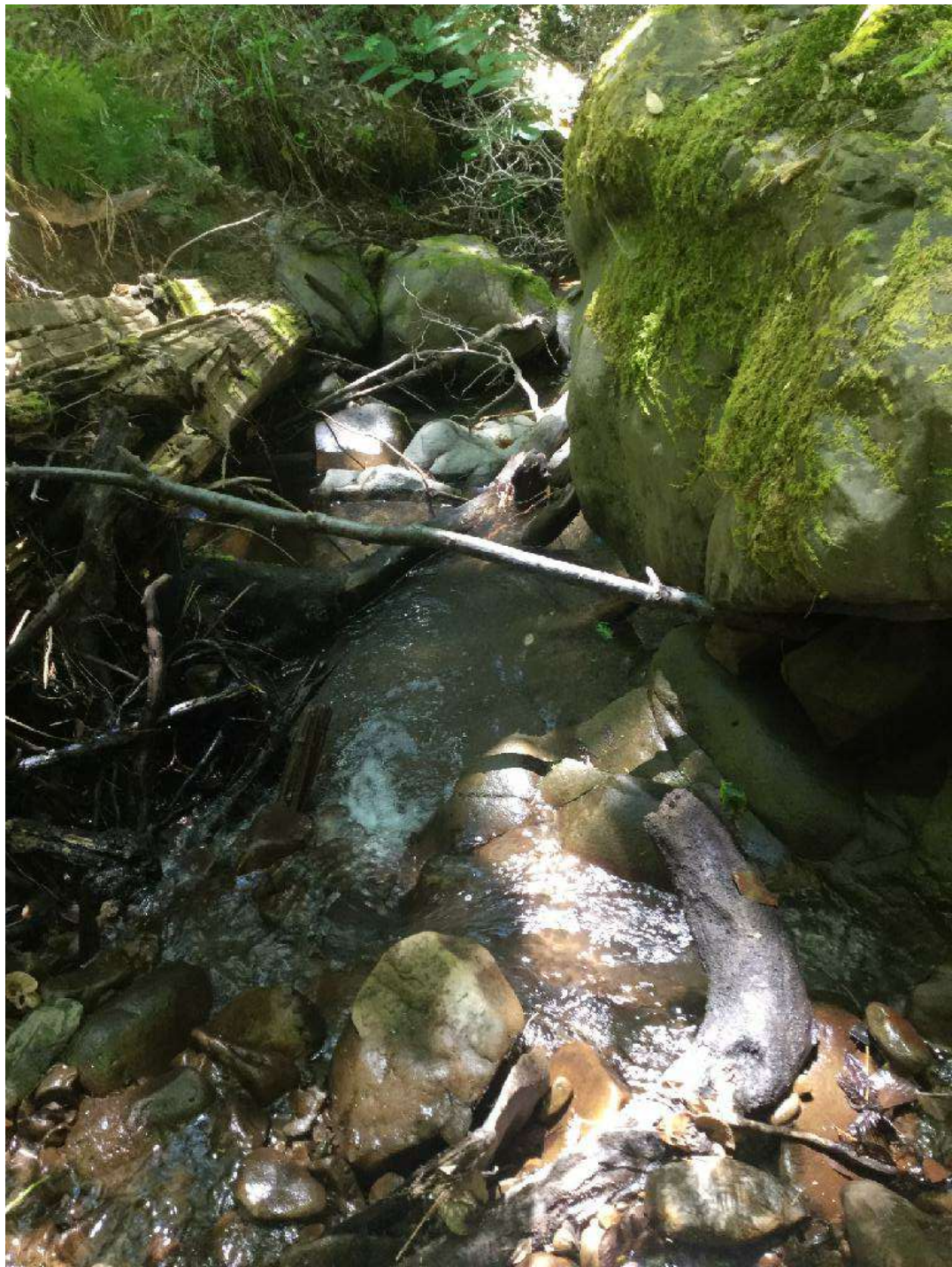












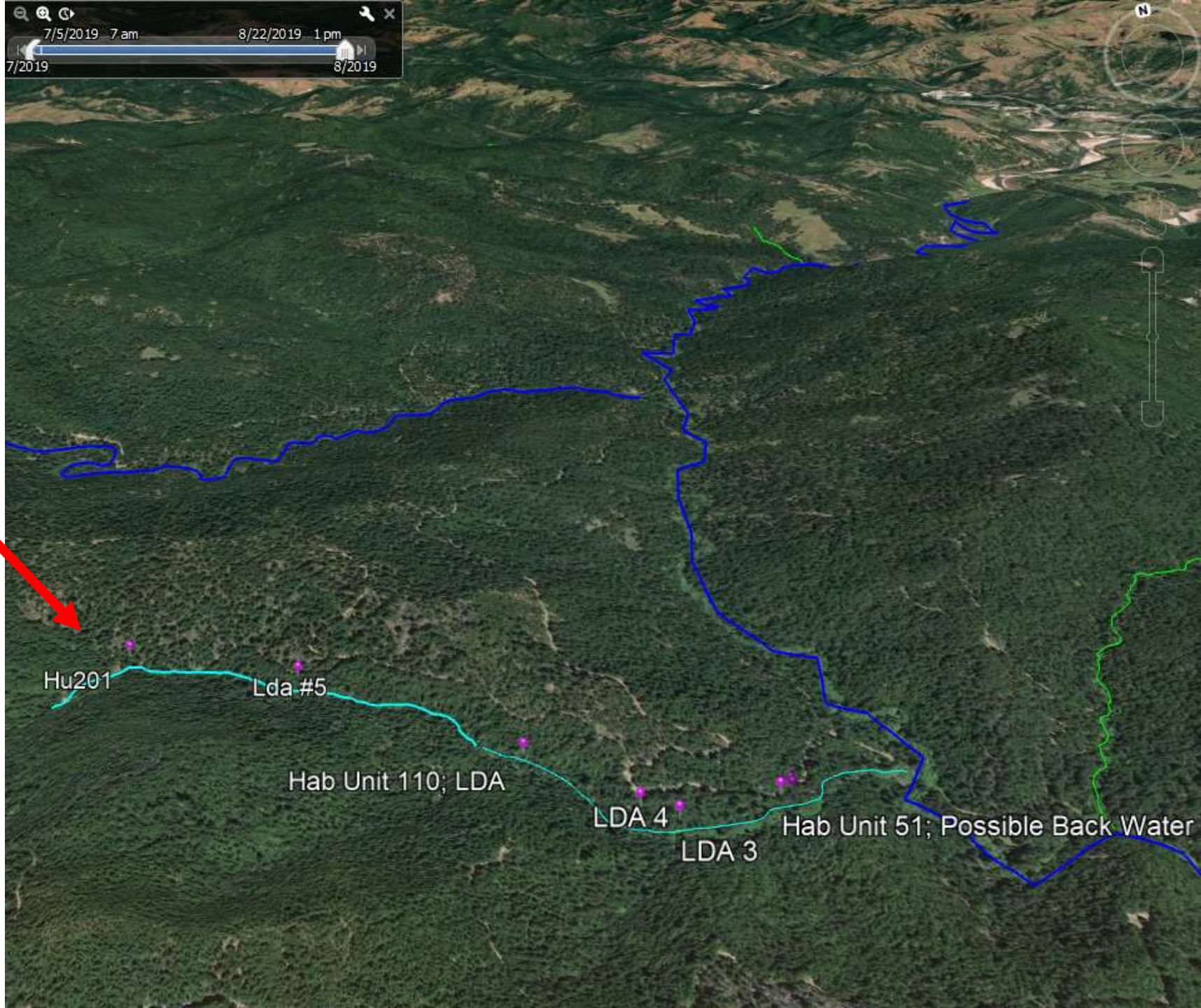












7/5/2019 7 am 8/22/2019 1 pm  
7/2019 8/2019

Unnamed  
Tributary to  
Sproul (562)



Hu201

Lda #5

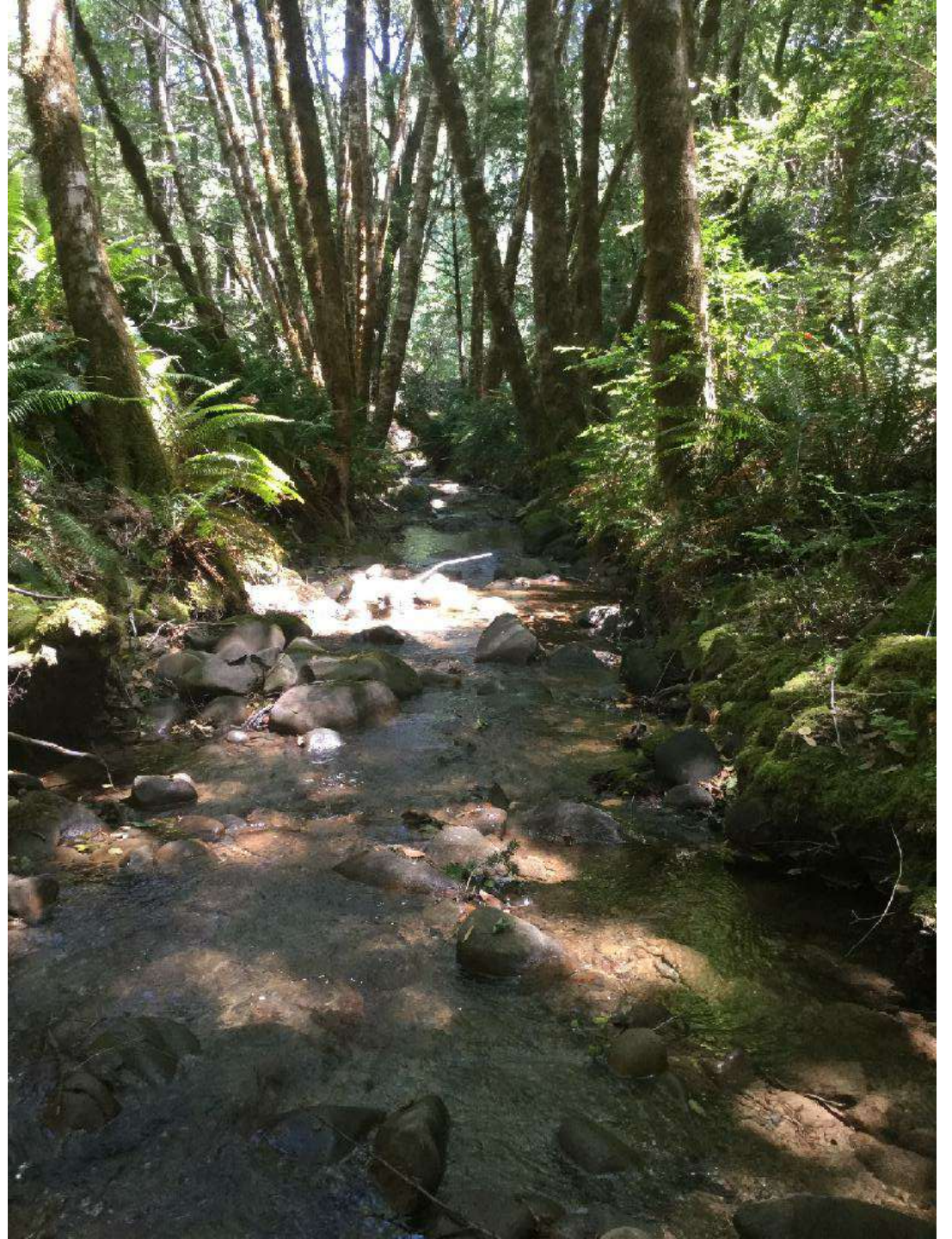
Hab Unit 110; LDA

LDA 4

LDA 3

Hab Unit 51; Possible Back Water

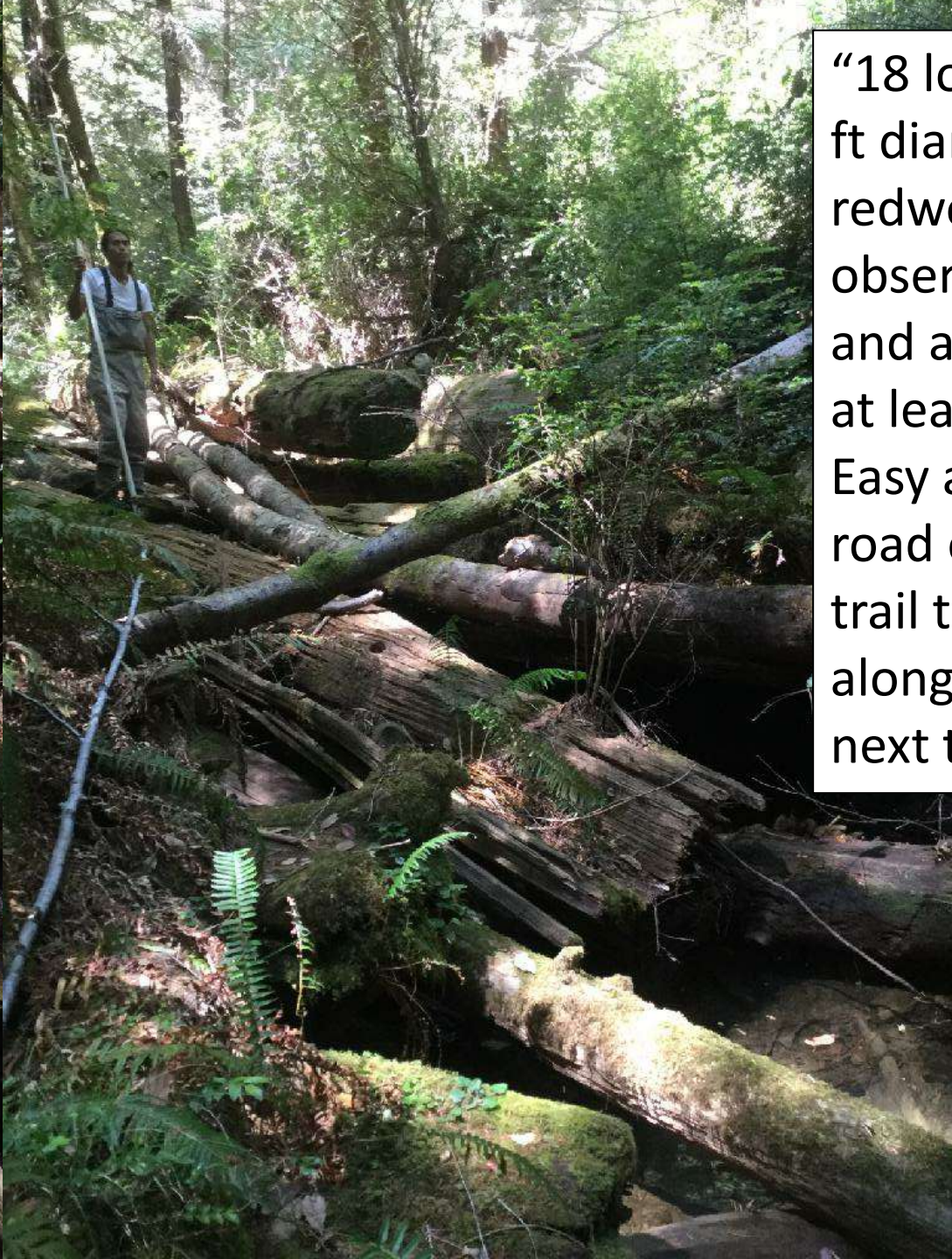












“18 logs... some 5 ft diameter redwoods. 0 fish observed below and above log jam at least 1000 ft. Easy access from road off of Jeep trail that goes along the stream next to log jam.”



Unnamed Tributary (554)



LDA. Hu 197  
LDA Hu141  
LDA Hab Unit 113  
LDA. Hu 31

West Fork  
(542)













































